



**Bobcat**

*One Tough Animal*

COMPACT EXCAVATOR

**E10z**

0-1 ton

🌐 Europe





# TOUGH CONDITIONS. TOUGHER PEOPLE.

At Bobcat, we're not just building machines—we're also celebrating the people who push them to the limit. Because real strength isn't just built into machines—it comes from the people who operate them.

[LEARN MORE](#)

# INTRODUCTION

# ONE TOUGH ANIMAL



## ► HISTORY OF BOBCAT

In 1958, the Melroe Manufacturing Company introduced a compact front-end loader that quickly evolved into the M400, the world's first true skid-steer loader. The company soon adopted what became the world famous 'Bobcat' brand — and its success paved the way for the global compact equipment industry we see today.

## ► INNOVATION CENTRE IN DOBŘÍŠ

Today, Bobcat's EMEA headquarters in Dobříš, Czech Republic, serves as a hub for innovation. Here, a manufacturing plant produces around 25 000 machines annually for EMEA customers and global export. The site is also home to the Bobcat Innovation Centre, where rigorous testing and product development take place using advanced facilities like climate and anechoic chambers.



## ► BOBCAT TODAY

With over 60 years of manufacturing experience and a commitment to ongoing innovation, Bobcat has delivered millions of machines to the market. Known for their high performance, reliability, and unparalleled comfort, the diverse lineup caters to various applications. Whether it's landscaping, snow removal, construction, demolition, or roadwork, Bobcat machines empower users to accomplish more.



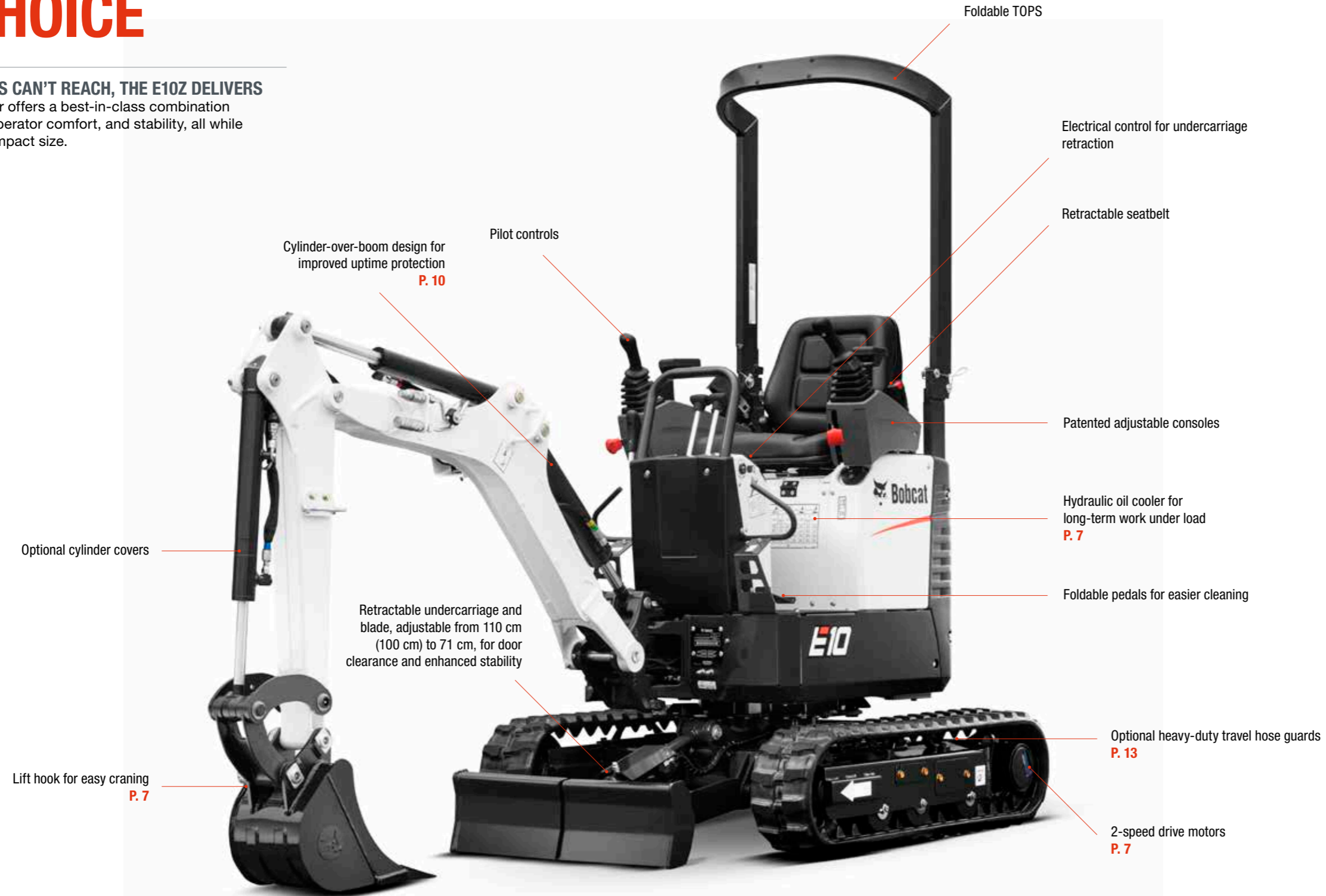
## ► OUR MISSION

We empower operators to accomplish more, while working in the toughest conditions and tightest situations. When our customers have the will, we provide the way.

# MARKET'S #1 CHOICE

## ► WHERE OTHERS CAN'T REACH, THE E10Z DELIVERS

This mini excavator offers a best-in-class combination of performance, operator comfort, and stability, all while maintaining its compact size.



### ► COMPACT POWERHOUSE

The Bobcat E10z gives you total control of the boom, arm, and bucket, even in the most challenging jobs. It helps you get the job done with confidence, saving you hours of manual labor.

P. 7



### ► RETRACTABLE UNDERCARRIAGE

The Bobcat E10z's hydraulically retractable tracks let you work in tight spaces and pass through narrow gates and doorways with ease.

P. 8



### ► ALL-DAY COMFORT

Enjoy all-day comfort with the E10z compact excavator, designed with a cushioned seat and adjustable armrests. These ergonomic features keep you comfortable and efficient from start to finish.

P. 8



### ► HASSLE-FREE TRANSPORT

The E10z compact excavator is easily towable on most trailers behind a standard passenger car, making transport to your next job worry-free.

# PERFORMANCE



## ▶ ADVANCED COOLING SYSTEM

Don't let the heat slow you down! The E10z's advanced cooling system, with an optional hydraulic oil cooler, ensures your machine stays cool and productive even in the most demanding applications.

## ▶ PRACTICAL AND VERSATILE

The E10z is built to shine in all kinds of jobs, offering amazing 360° stability. With the widest track profile on the market in the extended undercarriage position, you'll get a major boost in both working range and lifting capacity.



# POWER WHERE YOU NEED IT

## ▶ NIMBLE AND FAST

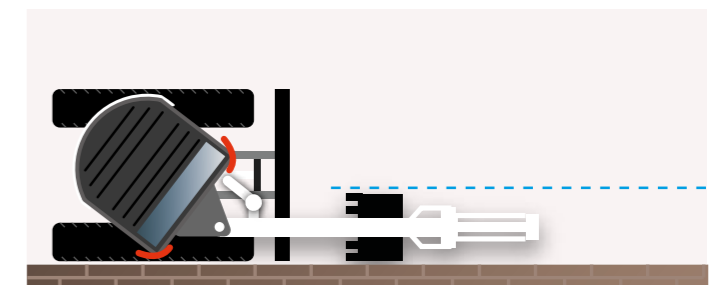
Get around the jobsite quickly with 2-speed, high-torque travel motors. Enjoy precise maneuvering, even at full power, for a significant boost in productivity.

## ▶ GET BIG RESULTS IN SMALL SPACES

With Zero House functionality, even with the ROPS protective structure extended, the Bobcat excavator lets operators work in tight spaces, right next to walls, and in other challenging environments.

## ▶ ZERO HOUSE SWING

The Bobcat Zero House Swing (ZHS) improves Zero Tail Swing (ZTS) by protecting the front upper-structure corners and preventing the boom swing cylinder from protruding during parallel digging.



Zero House Swing (ZHS)

# TAKE CONTROL



## ▶ PILOT CONTROLS

Take comfort and control to the next level with pilot controls and selectable patterns, allowing you to operate the machine in your preferred style.



## ▶ OPTIMIZED FOR COMFORT

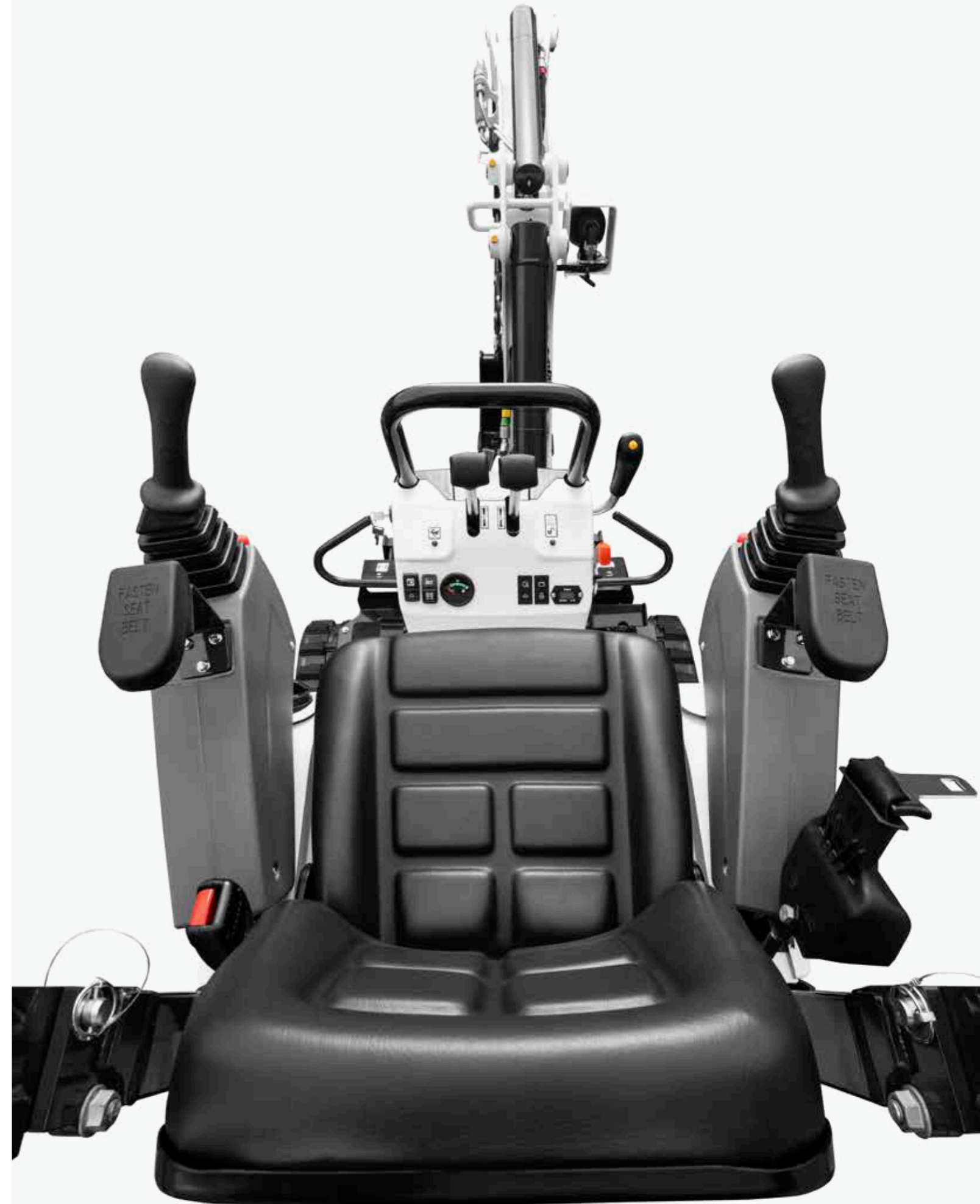


Low noise and vibration levels ensure excellent operator comfort while reducing environmental impact.

## ▶ READY FROM DAY ONE



Equipped with an expandable undercarriage and blade as standard, there's no need to remove or reinstall the blade extensions.



# BUILT TO LAST



## ▶ MADE TO KEEP YOU IN THE FIELD

- Cylinder-over-boom design for enhanced uptime protection
- All-metal covers for superior durability
- Optional cylinder covers and heavy-duty travel hose guards for increased uptime in demolition
- Materials, components, and structures rigorously tested for endurance in extreme conditions

## ▶ SIMPLE MAINTENANCE

With Bobcat's industry-leading service access checkpoints, you can quickly and easily perform maintenance and service tasks.



# THERE'S NO TIME FOR DOWNTIME. STAND UP TO THE HARSHTEST CONDITIONS, DAY AFTER DAY.

## ▶ STANDARD WARRANTY

Bobcat Company develops every machine to the highest standards of quality and durability. That's why our standard warranty provides 24 months or 2 000 operating hours (whichever occurs first) of coverage.



## ▶ PROTECTION PLUS EXTENDED WARRANTY

Get peace of mind with a Protection Plus extended warranty. Providing the same level of protection as the standard warranty, Protection Plus also reflects different customer needs and expectations by offering a choice of durations and annual operating hours. According to your needs, you can benefit from the coverage for up to 5 years or 6 000 engine hours. And Protection Plus is transferrable — so it will likely increase your machine's resale value.



## ▶ BOBCARE

A long-running machine starts with proper planned maintenance. And it helps protect against repair costs and unplanned failures when you're counting on your machine to work.

- Avoid risk by preventing major repairs and complete failures.
- Accomplish more by reducing downtime and increasing your productivity and profitability.

# STANDARD EQUIPMENT & OPTIONS

STANDARD EQUIPMENT & OPTIONS	
	E10z
<b>PERFORMANCE</b>	
Auxiliary double action	•
Auxiliary hydraulics on boom with quick couplers	✓
Auxiliary on arm with caps or quick coupler	•
Hydraulic oil cooler	•
Object handling device (lifteye)	•
Spark arrester muffler kit	•
Two-speed travel	✓
<b>SEAT &amp; CONTROLS</b>	
Control console locks	✓
Keyless ignition	•
Retractable seatbelt	✓
Seat	✓
TOPS canopy*	✓
<b>UNDERCARRIAGE &amp; TRACKS &amp; DOZER BLADE</b>	
180 mm rubber track	✓
710 mm dozer blade / 1 100 mm extended	✓
Hydraulically expandible undercarriage from 710 to 1 100 mm	✓
Electronically activated track expansion	✓
<b>LIGHTS &amp; BEACON</b>	
LED light	•
Work light	✓
Beacon	•
<b>MISCELLANEOUS</b>	
Cylinder covers (arm and bucket)*	•
Heavy-duty travel hose guard*	•
Horn	✓
Travel motion alarm	•
Vandalism protection	✓
Water separator	✓
Grease gun with holder	•

• = option    ✓ = standard

\*Included in the Demolition Package  
Tip Over Protective Structure (TOPS) – Meets requirements of ISO 12117

## PERSONALISE YOUR MACHINE

Sometimes, we all want to add a specific functionality or a personal touch to the machine. Choose from a list of comprehensive options and customise your Mini-Excavator to your heart's content!



Cylinder covers



Keyless ignition



Hydraulic oil cooler

# MULTI-TOOL CARRIER

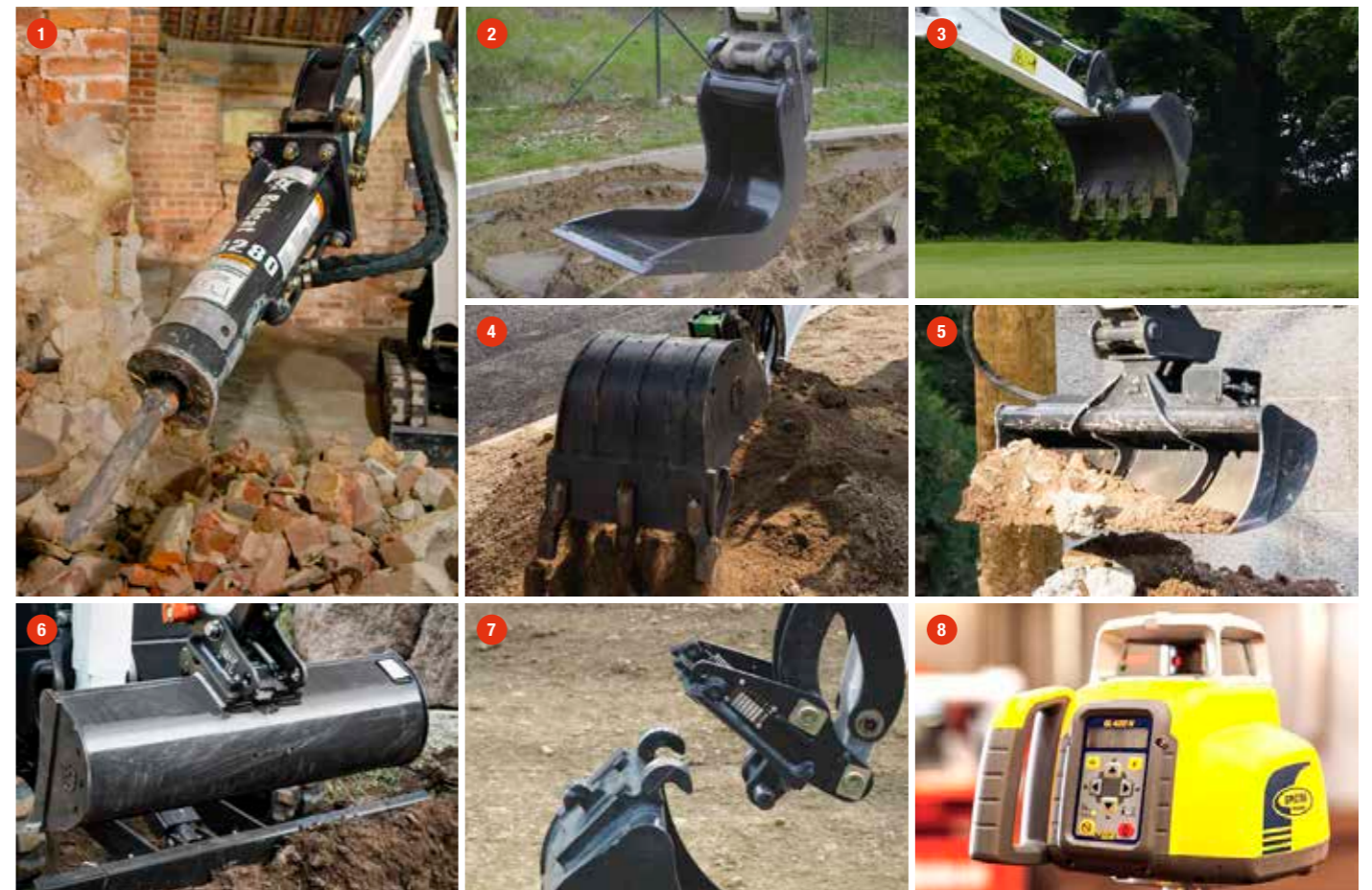
## TOP SELECTION OF ATTACHMENTS

	E10z
1 Breaker	•
2 Bucket, clay spade	•
3 Bucket, digging, standard duty	•
4 Bucket, digging, UK type	•
5 Bucket, grading	•
6 Bucket, grading, UK style	•
7 Coupler, mechanical	•
8 Laser equipment	•

## BOBCAT ATTACHMENTS

Get more versatility and efficiency with Bobcat attachments and implements. With the biggest selection in the industry, it's easy to find the perfect match for your Bobcat machine. Plus, with durable components and a 12-month warranty on every genuine Bobcat attachment, you can enjoy even more peace of mind.

• = available    – = not available



BOBCAT OFFERS A WIDE RANGE OF ATTACHMENTS TO MEET YOUR NEEDS. CHECK OUT THE 'BOBCAT ATTACHMENT CATALOG' FROM YOUR DEALER OR DOWNLOAD THE 'ONE TOUGH WORLD' APP VIA THE QR CODE.



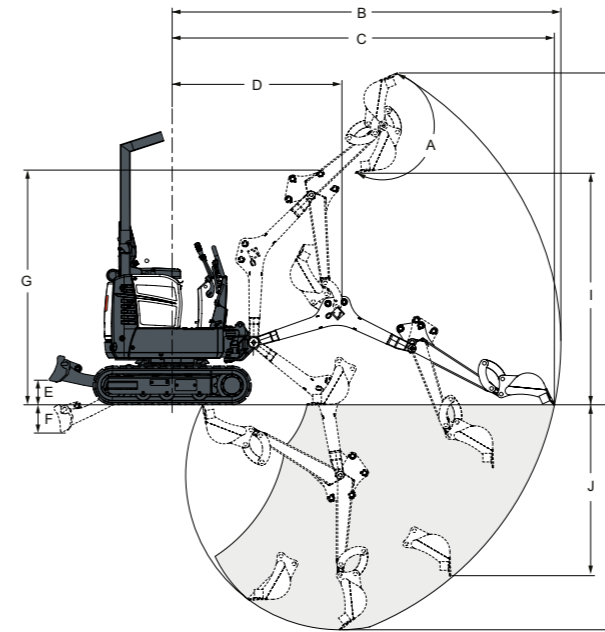
# SPECIFICATIONS

SPECIFICATIONS		
	Unit	E10z
<b>WEIGHTS</b>		
Operating weight with TOPS canopy and bucket (ISO 6016)	kg	1 176
<b>ENGINE</b>		
Make / model		Kubota / D722-E4B (Stage V)
Fuel		diesel
Cooling		liquid, forced circulation
Number of cylinders		3
Displacement	l	0.72
Maximum power @ 2 000 rpm (ISO 14396)	kW	7.5
Maximum torque (SAE)	Nm	40.1
<b>CONTROLS</b>		
Steering		Direction and speed controlled by two hand levers
Hydraulics		Two joysticks control the boom, bucket, dipper stick, and upper structure
<b>HYDRAULIC SYSTEM</b>		
Pump type		Double gear pump
Pump capacity	l/min	20
Auxiliary flow	l/min	20
Auxiliary relief	bar	190
Control valve		Nine-spool parallel type, open center
<b>PERFORMANCE</b>		
Digging force, dipperstick (ISO 6015)	N	5 550
Digging force, bucket (ISO 6015)	N	8 294
Drawbar pull	N	9 905
Ground pressure with rubber tracks	kPa	29.7
Travel speed, low range	km/h	2.1
Travel speed, high range	km/h	3.1
<b>SLEW SYSTEM</b>		
Boom swing, left	°	67
Boom swing, right	°	64
Slew rate	rpm	9
<b>BRAKES</b>		
Travel brake		Hydraulic lock in motor circuit
Slew brake		Hydraulic lock on motor and pin lock
<b>FLUID CAPACITIES</b>		
Cooling system	l	3
Engine lubrication plus oil filter	l	3.5
Fuel reservoir	l	16
Hydraulic reservoir	l	2.6
Hydraulic system	l	10.1
<b>ENVIRONMENTAL</b>		
Noise level LpA (EU Directive 2006/42/EC)	dB(A)	80
Noise level LWA (EU Directive 2000/14/EC)	dB(A)	93
Whole body vibration (ISO 2631-1)	ms <sup>-2</sup>	0.68
Hand-arm vibration (ISO 5349-1)	ms <sup>-2</sup>	0.7

Certain specification(s) are based on engineering calculations and are not actual measurements. Specification(s) are provided for comparison purposes only and are subject to change without notice. Specification(s) for your individual Bobcat equipment will vary based on normal variations in design, manufacturing, operating conditions, and other factors. Pictures of Bobcat units may show other than standard equipment.

# DIMENSIONS & WORKING AREA

## WORKING RANGE



## WORKING AREA

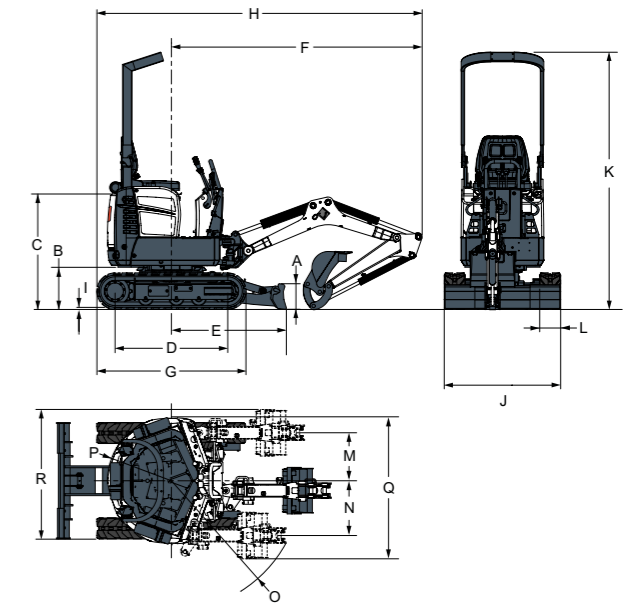
	Unit	E10z
<b>A</b> Bucket pivot angle	°	196
<b>B</b> Maximum reach of working equipment	mm	3 145
<b>C</b> Maximum reach at ground level	mm	3 093
<b>D</b> Max. working equipment radius with boom at full height and dipper stick retracted	mm	1 374
<b>E</b> Maximum blade height	mm	196
<b>F</b> Maximum blade depth	mm	230
<b>G</b> Maximum height of working equipment with dipperstick retracted	mm	1 899
<b>H</b> Maximum bucket tooth height	mm	2 685
<b>I</b> Maximum dump height	mm	1 818
<b>J</b> Maximum vertical wall excavation depth	mm	1 383
<b>K</b> Maximum digging depth	mm	1 820

## LIFTING CAPACITIES

RATED LIFT CAPACITY AT 2000 MM LIFT RADIUS [R] (KG) BLADE UP, 360°			
LIFT POINT HEIGHT [H]	Unit	WITHOUT CYLINDER COVERS	WITH CYLINDER COVERS
		E10z	
2 000 mm above ground	kg	212	211
1 000 mm above ground	kg	214	216
Ground	kg	204	206
1 000 mm below ground	kg	229	228

Rated hydraulic lift capacity. The lifting capacities are based on ISO 10567 and do not exceed 75% of the static tilt load of the machine or 87% of the hydraulic lifting capacity of the machine.

## DIMENSIONS

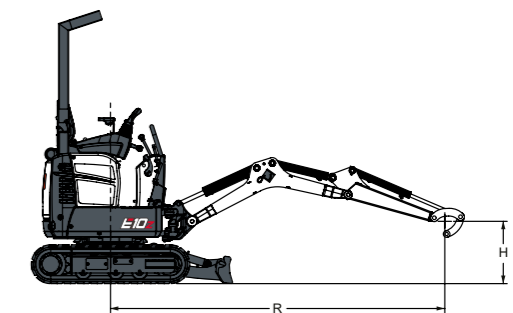


## DIMENSIONS

	Unit	E10z
<b>A</b>	mm	220
<b>B</b>	mm	363
<b>C</b>	mm	992
<b>D</b>	mm	968
<b>E</b>	mm	987
<b>F</b>	mm	2 153
<b>G</b>	mm	1 280
<b>H</b>	mm	2 793
<b>I</b>	mm	16
<b>J</b>	mm	710 – 1 100

## DIMENSIONS

	Unit	E10z
<b>K</b>	mm	2 209
<b>L</b>	mm	180
<b>M</b>	mm	413
<b>N</b>	mm	471
<b>O</b>	mm	1 121
<b>P</b>	mm	550
<b>Q</b>	mm	1 221
<b>R</b>	mm	1 162
<b>Boom length</b>	mm	1 276
<b>Arm length</b>	mm	810



# FINANCING OPTIONS

## 24, 36, OR 48-MONTH FINANCING\*

Take advantage of 24, 36, or 48-month financing programs starting from **0% interest** and improve your cash flow.

Ask your dealer for the financing offers available.



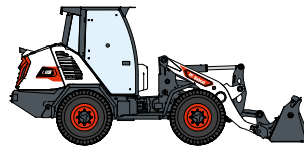
**340** MACHINES / **150** ATTACHMENT FAMILIES / **1** TOUGH ANIMAL



**SKID-STEER  
LOADERS**



**COMPACT TRACK  
LOADERS**



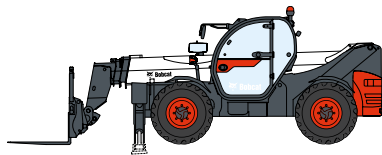
**COMPACT WHEEL  
LOADERS**



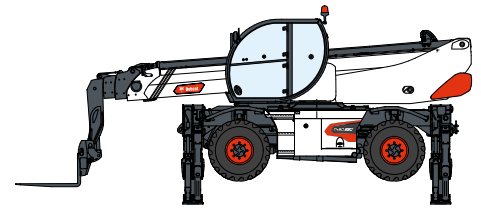
**COMPACT  
EXCAVATORS**



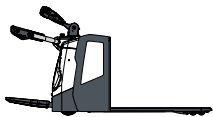
**FORKLIFTS**



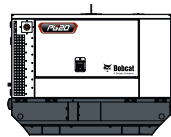
**TELEHANDLERS**



**ROTARY TELEHANDLERS**



**WAREHOUSE  
EQUIPMENT**



**GENERATORS**



**AIR  
COMPRESSORS**



**LIGHT COMPACTION  
EQUIPMENT**



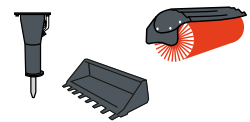
**COMPACT  
TRACTORS**



**MINI TRACK  
LOADER**



**MOWERS**



**ATTACHMENTS**

**DOOSAN**

**Bobcat is a Doosan Company.** Doosan is a global leader in construction equipment, power & water solutions, engines, and engineering proudly serving customers and communities for more than a century. | Bobcat and the Bobcat logo are registered trademarks of Bobcat Company in the United States and various other countries. ©2025 Bobcat Company. All Rights Reserved.

\*Financing options may vary by country and dealer. Always ask your dealer about currently available financing options. Terms and conditions may apply.

Doosan Bobcat EMEA, U Kodelky 1810, 263 12 Dobříš, Czech Republic



**Bobcat**

# GET IN TOUCH WITH US **TODAY**

Click one of the following links or scan the QR code:



**Request a quote**



**Request a demo**



**Find a dealer**

